



WE DELIVER.

Solutions. Shipments. Success.

Container Dimensions

Date	November 17th, 2017
Revision	01-2017



BREMERLLOYD

Here you can find an overview of the different container types and their specifications. For further advice or questions, do not hesitate to contact our Bremer Lloyd team.

Please note, that the loading details refer only to the equipment. **Road restrictions vary from country to country**, so please contact our Bremer Lloyd team for the information about the maximum load of the container. Please also note, that Bremer Lloyd assumes no liability for the information below.

SOLAS Convention:

The International Maritime Organization (IMO) of the United Nations has adopted an international Convention for **the Safety of Life at Sea (SOLAS)**.

Since July 2016, the convention has stipulated that the shipper, which is specified on the sea consignment, must determine the weight of the container and submit the verified gross mass (VGW) to the shipping company. This must be done, before the container is loaded onto a ship for export. Otherwise the loading of the container will be rejected by the port authority. Therefore, we need the VGM declaration from you.

The documents should be submitted at the latest at the packaging of the Container, because some ports prohibit entry without VGM documents. To ensure fast processing, the declaration should be sent by e-mail.

There are two accepted methods for calculating the verified gross mass of a container

1. Weighting the loaded container
2. Weighting the load and adding the weight of packaging and securing material as well as the empty weight of the container

If it is not possible for you to determine the VGM correctly, we will organise a weighing service for you. For more information and additional cost, please contact us.

SOLAS concerns:

- All export containers
- Packed containers loaded on cargo ships in international shipping
- Packed containers loaded on a ro-ro ship, that is not on international short-haul traffic
- Also, the container types: bulk containers, container platforms, flat racks and tank containers

Container Dimensions

Standard Container

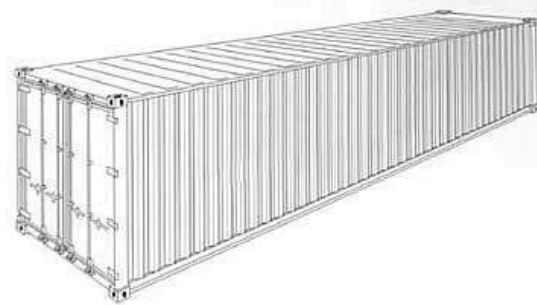
20' Standard Container

Outside dimensions		
Length	Width	Height
20' 0"	8' 0"	8' 6"
Inside dimensions		
Length	Width	Height
19' 4.2"	7' 8.60"	7' 9.9"
Door opening		
Width	Height	
7' 8.24"	7' 5.76"	
Capacity (lb)		
Max. payload	Tare	
47.770	5.140	
Volume (ft ³)		
1.171		



40' Standard Container

Outside dimensions		
Length	Width	Height
40' 0"	8' 0"	8' 6"
Inside dimensions		
Length	Width	Height
39' 5.7"	7' 8.6"	7' 9.9"
Door opening		
Width	Height	
7' 8.24"	7' 5.76"	
Capacity (lb)		
Max. payload	Tare	
58.380	8.820	
Volume (ft ³)		
2.383		

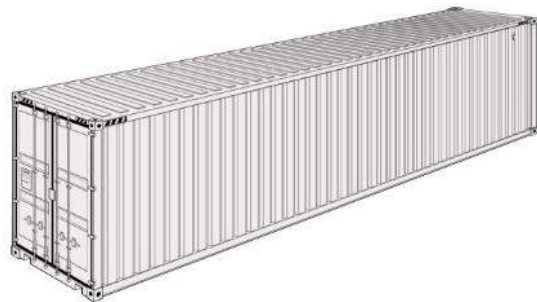


Container Dimensions

High Cube Container

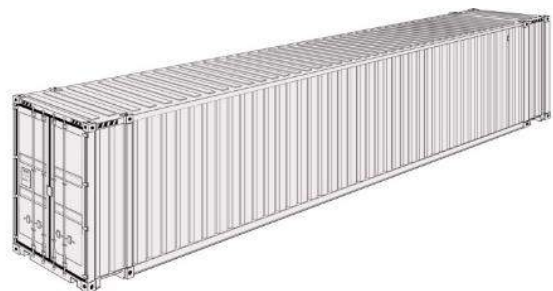
20' High Cube Container

Outside dimensions		
Length	Width	Height
20' 0"	8' 0"	9' 6"
Inside dimensions		
Length	Width	Height
19' 4"	7' 6"	8' 6"
Door opening		
Width	Height	
7' 6"	8' 5"	
Top aperture		
Length	Width	
18' 4"	7' 2"	
Capacity (lb)		
Max. payload	Tare	
61,000	6,200	
Volume (ft ³)		
1,259		



40' High Cube Container

Outside dimensions		
Length	Width	Height
40' 0"	8' 0"	9' 6"
Inside dimensions		
Length	Width	Height
39' 5"	7' 7"	8' 7"
Door opening		
Width	Height	
7' 6"	8' 5"	
Top aperture		
Length	Width	
38' 6"	7' 2"	
Capacity (lb)		
Max. payload	Tare	
61,000	10,650	
Volume (ft ³)		
2,570		



Container Dimensions

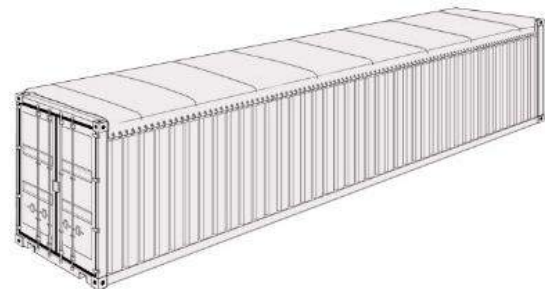
Open Top Container

20' Open Top Container



Outside dimensions		
Length	Width	Height
20' 0"	8' 0"	8' 6"
Inside dimensions		
Length	Width	Height
19' 4"	7' 8"	7' 8"
Door opening		
Width	Height	
7' 8"	7' 6"	
Top Aperture		
Length	Width	
18' 11"	7' 4"	
Capacity (lb)		
Max. payload	Tare	
62,218	4,982	
Volume (ft ³)		
1,137		

40' Open Top Container



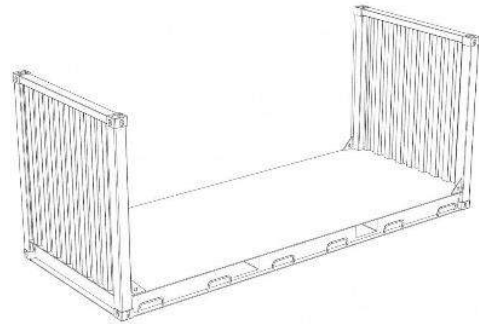
Outside dimensions		
Length	Width	Height
40' 0"	8' 0"	8' 6"
Inside dimensions		
Length	Width	Height
19' 4"	7' 8"	7' 8"
Door opening		
Width	Height	
7' 8"	7' 5"	
Top Aperture		
Length	Width	
38' 9"	7' 4"	
Capacity (lb)		
Max. payload	Tare	
63,100	8,550	
Volume (ft ³)		
2,336		

Container Dimensions

Flatrack Container

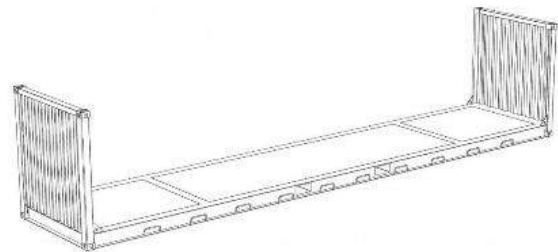
20' Flat Rack Container

Outside dimensions		
Length	Width	Height
20' 0"	8' 0"	8' 6"
Inside dimensions		
Length	Width	Height
18' 6"	7' 2"	7' 4"
Capacity (lb)		
Max. payload	Tare	
68,790	6,170	



40' Flat Rack Container

Outside dimensions		
Length	Width	Height
40' 0"	8' 0"	8' 6"
Inside dimensions		
Length	Width	Height
38' 2"	7' 9"	6' 5"
Capacity (lb)		
Max. payload	Tare	
99,207	11,023	



Containerabmessungen

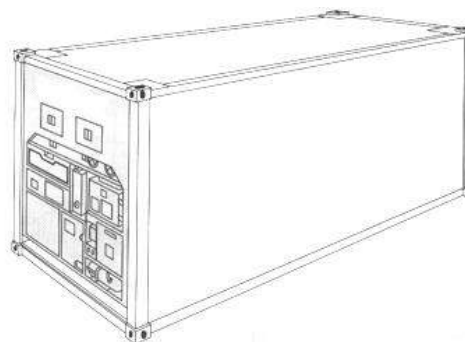
Reefer Container



BREMERLLOYD

20' Reefer Container

Outside dimensions		
Length	Width	Height
20' 0"	8' 0"	8' 6"
Inside dimensions		
Length	Width	Height
17' 6.2"	7' 2.6"	7' 4.7"
Door opening		
Width	Height	
7' 2.6"	7' 3.4"	
Capacity (lb)		
Max. payload	Tare	
45,195	7,715	
Volume (ft ³)		
851		



40' Reefer Container

Outside dimensions		
Length	Width	Height
40' 0"	8' 0"	8' 6"
Inside dimensions		
Length	Width	Height
36' 6.6"	7' 2.5"	7' 3.2"
Door opening		
Width	Height	
7' 2.5"	7' 1.5"	
Capacity (lb)		
Max. payload	Tare	
53,947	13,249	
Volume (ft ³)		
1,741		

